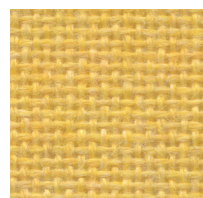
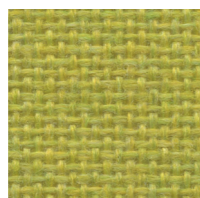


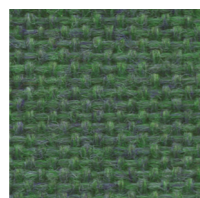
FR701®
2100



Yellow
744



Chartreuse
734



Fir
743



Leaf
755



Dune
749



Wheat
130



Bone
748



Buff
460



Eggshell
144



White
224



Sunshine
797



Lime
721



Teal
742



Green Neutral
402



Stream
757



Eucalyptus
468



Desert Sand
758



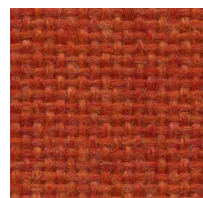
Apricot Neutral
404



Quartz
380



Pearl
481



Orange
746



Sky
740



Sapphire
745



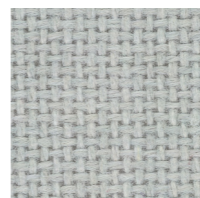
Blue Spruce
467



Verte Papier
561



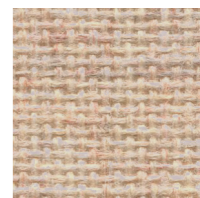
Blue Papier
539



Coin
794



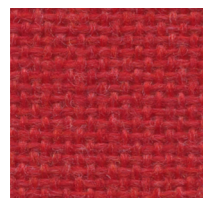
Cherry Neutral
400



Vanilla Neutral
403



Opal
394



Cardinal
738



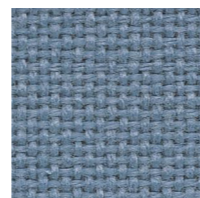
Cobalt
420



Baltic
153



Wedgewood
150



Bayberry
486



Crystal Blue
175



Blue Neutral
401



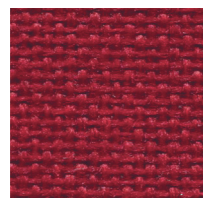
Cinnabar
422



Straw
747



Silver Papier
538



Red
799



Iris
798



Blue Plum
553



Ultramarine
470



Aquamarine
381



Steel Grey
471



Grey Mix
238



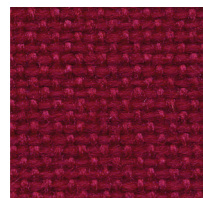
Pumice
423



Light Moss
754



Cement Mix
750



Claret Accent
418



Deep Burgundy
556



Black
408



Chocolate
793



Medium Grey
298



Flannel
795



Amethyst
424



Moleskin
796



Earth
792



Silver Neutral
406

FR701® 2100

Specifications

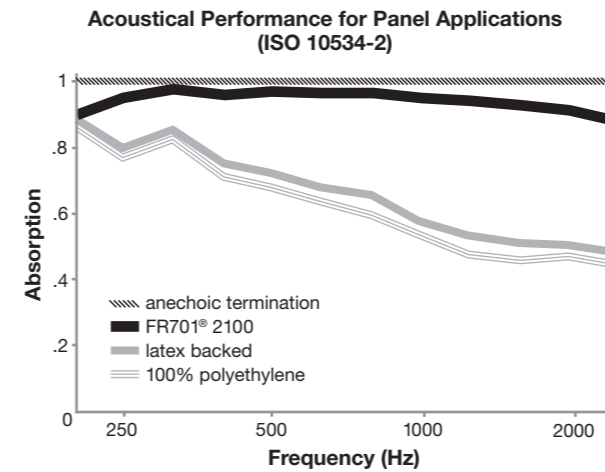
Content	100% post-consumer recycled polyester
Weight	16.0 ± 0.5 oz./lin. yd.
Width	66" min. useable
Repeat	none

Cleaning Code

Standard Care Label W-S. Clean with water based cleaning agents, foam or pure, water free solvents. Vacuuming or light brushing is recommended to prevent dust and soil buildup.

Acoustical Performance

The plot below summarizes impedance tube measurements of absorption of an anechoic termination and various fabrics in front of the anechoic termination.



NRC of anechoic termination	1.00
NRC of fabric in front of anechoic termination	0.95

Performance

- Colorfastness to Light (AATCC 16.3 Option 3)
Grade 4 min. at 40 hours

- Colorfastness to Crocking (AATCC 8)
Grade 4 min. dry & Grade 3 min. wet

- Breaking Strength (ASTM D5034)
150 lbf min. warp and fill

- Flammability (ASTM E84)
Class I or A

Sustainability

- 100% recycled and recyclable**
Terratec is a registered trademark of Duvaltex
- facts[™] Silver**

Miscellaneous

Proudly woven in North America supporting our local communities.
Application testing of this product is recommended. Colors may vary between dye lots. This is a non-directional fabric.

Visit guilfordofmaine.com for samples.

This pattern is included in the underwriters laboratory panel fabric recognition program. Additional testing of this U.L. recognized component fabric is not required on approved panels from participating manufacturers.

*Certification Marks owned by the Association for Contract Textiles, Inc.