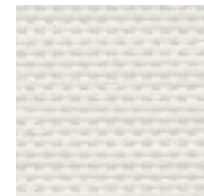
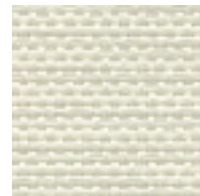


Whisper 1240

Whisper 1240



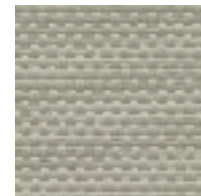
Spirit
8888



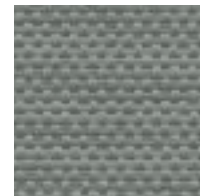
Dim
1276



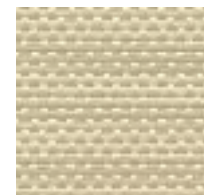
Silence
1279



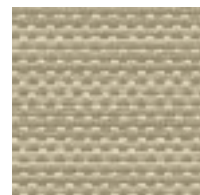
Zen
1282



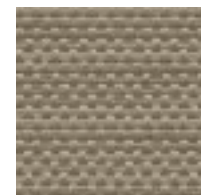
Quiet
1286



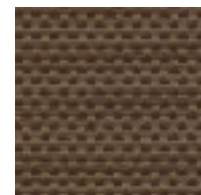
Ambience
1278



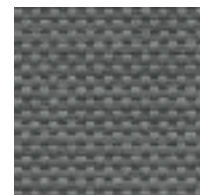
Hush
1281



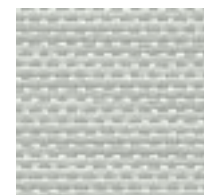
Mute
1284



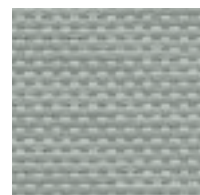
Muffle
1287



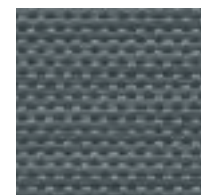
Serenity
1285



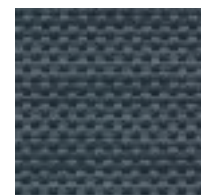
Tranquility
1280



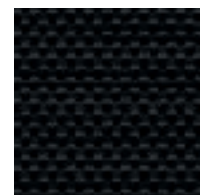
Stillness
1283



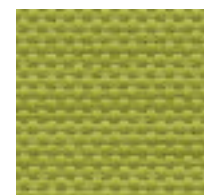
Lull
1289



Cloud
1288



Shadow
1300



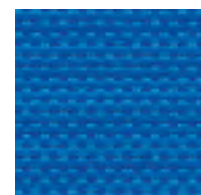
Reserve
1290



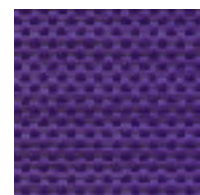
Baffle
1292



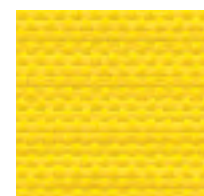
Placid
1294



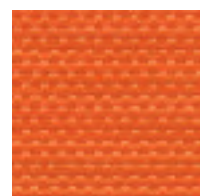
Secret
1296



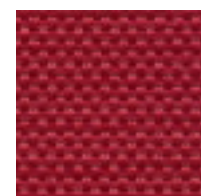
Mystery
1299



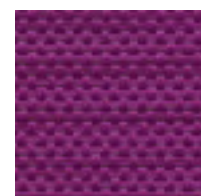
Peep
1291



Mellow
1293



Chant
1295



Mum
1297

Specifications

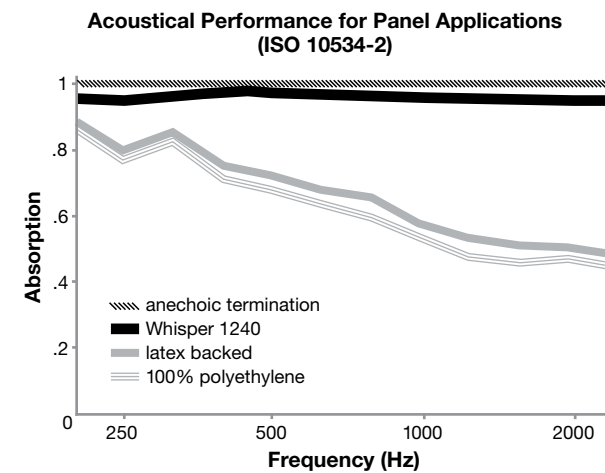
Content	53% post-consumer recycled polyester 47% polyester
Weight	10.9 ± 1.0 oz./lin. yd.
Width	66" min. useable
Repeat	none
Treatment	polyester binder

Cleaning Code

Standard Care Label W-S. Clean with water based cleaning agents, foam or pure, water free solvents. Vacuuming or light brushing is recommended to prevent dust and soil buildup.

Acoustical Performance

The plot below summarizes impedance tube measurements of absorption of an anechoic termination and various fabrics in front of the anechoic termination.



NRC of anechoic termination	1.00
NRC of fabric in front of anechoic termination	.95

Performance

- Colorfastness to Light (AATCC 16.3 Option 3)
Grade 4 min. at 40 hours
- Colorfastness to Crocking (AATCC 8)
Grade 4 min. dry & Grade 3 min. wet
- Breaking Strength (ASTM D5034)
270 lbf warp and 150 lbf fill
- Flammability (ASTM E84)
Class I or A

Sustainability



Miscellaneous

Proudly woven in North America supporting our local communities.

Application testing of this product is recommended. Colors may vary between dye lots. This is a directional fabric.

Visit guilfordofmaine.com for samples.

This pattern is included in the underwriters laboratory panel fabric recognition program. Additional testing of this U.L. recognized component fabric is not required on approved panels from participating manufacturers.

*Certification Marks owned by the Association for Contract Textiles, Inc.